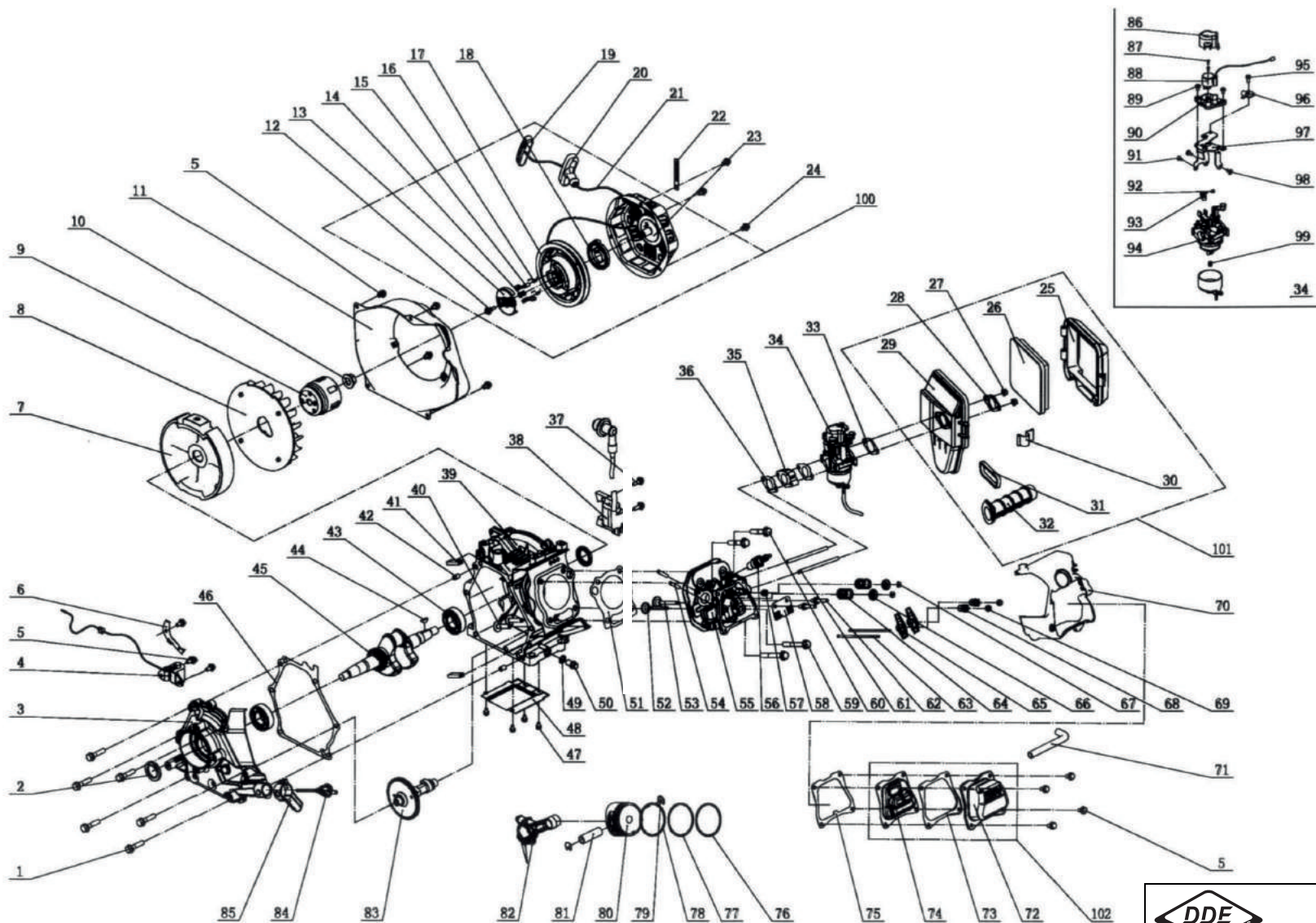



DDE DPG3251Si (apт. DPG3251Si)



		DDE DPG3251Si (apт. DPG3251Si)	
DYNAMIC DRIVE EQUIPMENT			
Technical department		Assembly drawing	
Engineer, chief designer		John Emerson Jr.	
DYNAMIC DRIVE EQUIPMENT, USA			Page 1

DDE DPG3251Si (apT. DPG3251Si)

#	Part Number	Description	Qty
1	1.5789.0835	Flange Bolt M8x35	6
2	2.11.014	Oil Seal	2
3	83.030007.01	Cover, Crankcase	1
4	83.127000.01	Oil Level Sensor	1
5	1.5789.0612	Flange Bolt M6x12	11
6	83.030010.01	Plate, Coil	1
7	83.120100.01	Flywheel	1
8	83.080001.01	Cooling Fan	1
9	83.060001.01	Pulley, Starter	1
10	2.02.006	Nut (M14x1.5)	1
11	83.080100.01.2	Fan Cover	1
12	45.060008.00	Screw, Ratchet Guide	1
13	45.060007.00	Ratchet Guide	1
14	45.060009.00	Spring, Ratchet Guide	1
15	45.060002.00	Starter Ratchet (Iron)	2
16	45.060003.00	Spring, Ratchet	2
17	21.061001.01	Recoil Starter Reel	1
18	21.061005.00	Recoil Starter Spring	1
19	81.061010.01	Rope Cap	1
20	81.061006.00	Grip, Starter	1
21	2.10.001	Rope	1
22	2.05.050	Wire Clip (100)	1
23	83.061100.01.2	Recoil Starter Cover	1
24	1.5789.0608	Flange Bolt M6x8	3
25	83.091200.01	Cover, Air Cleaner	1
26	83.091300.01	Element, Air Cleaner	1
27	1.6177.1.06	Nut M6	2
28	83.090001.01	Flange, Carburetor	1
29	83.091100.01	Base, Air Cleaner	1
30	83.091006.01	Buckle, Air Cleaner	1
31	83.091002.02	Seal	1
32	83.090004.01	Pipe, Air Cleaner	1
33	83.130004.01	Gasket, Air Cleaner	1
34	83.130000.01	Carburetor Assembly	1
35	83.130001.01	Insulator, Carburetor	1
36	83.130002.01	Gasket, Insulator	2
37	1.5789.0620	Flange Bolt M6x20	2
38	83.123000.01	Ignition Coil	1
39	83.030100.01	Crankcase	1
40	83.040013.01	Lifter, Valve	2
41	83.030013.01	Seal Strip, Crankcase Cover	2
42	2.04.002	Dowel Pin Ø8x14	2
43	1.276.6205	Bearing 6205	2
44	2.14.017	Semi Circular Key (4x6.5x16)	1
45	83.050100.01	Crankshaft	1
46	83.030008.01	Gasket, Crankcase Cover	1
47	1.9074.4.0510	Bolt And Washer Assembly M5x10	4
48	83.080014.01.01	Air Guide Board	1
49	2.03.016	Washer, Drain Bolt (Ø10xØ16x1.5)	1
50	2.08.037	Bolt, Drain (M10x1.25x25)	1
51	83.030009.01	Gasket, Cylinder Head	1
52	83.040006.01	Valve, Exhaust	1

#	Part Number	Description	Qty
53	83.040002.01	Valve, Intake	1
54	2.01.017	Stud Bolt (M6x32)	2
55	83.010100.01	Cylinder Head	1
56	2.15.002	Spark Plug (F6RTC)	1
57	83.040017.01	Oil Seal, Valve	1
58	83.040004.01	Guide Plate, Push Rod	1
59	1.5789.0865	Flange Bolt M8x65	2
60	1.5789.0845	Flange Bolt M8x45	2
61	2.01.020	Stud Bolt M6x97	2
62	83.040010.01	Bolt, Rocker Arm	2
63	83.040005.01	Push Rod	2
64	83.040003.01	Spring, Valve	2
65	83.040009.01	Rocker Arm, Intake Valve	2
66	83.040001.01	Retainer, Valve Spring	2
67	83.040014.01	Valve Collar	2
68	21.040020.00	Adjusting Nut, Valve	2
69	21.040021.00	Nut, Lock	2
70	83.080200.01	Air Shroud, Cylinder	1
71	23.020001.01	Breather Tube	1
72	83.021101.01	Cover, Cylinder Head	1
73	83.021001.01	Gasket, Cylinder Head Element	1
74	83.021200.01	Element, Cylinder Head	1
75	83.020002.01	Gasket, Cylinder Head Cover	1
76	83.050301.01	Ring, First Piston	1
77	83.050302.01	Ring, Second Piston	1
78	83.050303.01	Ring, Oil	1
79	2.09.002	Circlip (Ø16xØ1)	2
80	83.050005.01	Piston	1
81	83.050003.01	Wrist Pin	1
82	83.050200.01	Connecting Rod	1
83	83.040100.01	Camshaft	1
84	83.031000.01	Oil Dipstick Assembly	1
85	83.030035.01	Oil Guide	1
86	81.132001.00	Cover, Stepper Motor	1
87	1.818.0306	Screw M3x6	2
88	81.132200.00	Stepper Motor	1
89	1.9074.1.0408	Screw M4x8	2
90	82.132100.00	Stepper Motor Base	1
91	1.819.0508	Screw M5x8	1
92	81.130010.00	Spring, Connector	1
93	81.130008.00	Connector, Choke Valve Axis	1
94	83.131000.01	Carburetor	1
95	1.9074.3.0512	Screw M5x12	1
96	81.130007.00	Clamp Board, Choke Control Line	1
97	83.130005.01	Support, Stepper Motor	1
98	1.9074.3.0508	Screw M5x8	2
99	83.131017.00	Standard Main Jet	1
	83.131017.00.01	Altitude Main Jet	/
100	83.061000.01	Recoil Assembly	1
101	83.091000.01	Air Cleaner Assembly	1
102	83.021000.01	Cylinder Head Cover	1



DYNAMIC DRIVE EQUIPMENT

DDE DPG3251Si (apT. DPG3251Si)

Technical department

Assembly drawing

Engineer, chief designer

John Emerson Jr.


DYNAMIC DRIVE EQUIPMENT, USA

Page 2

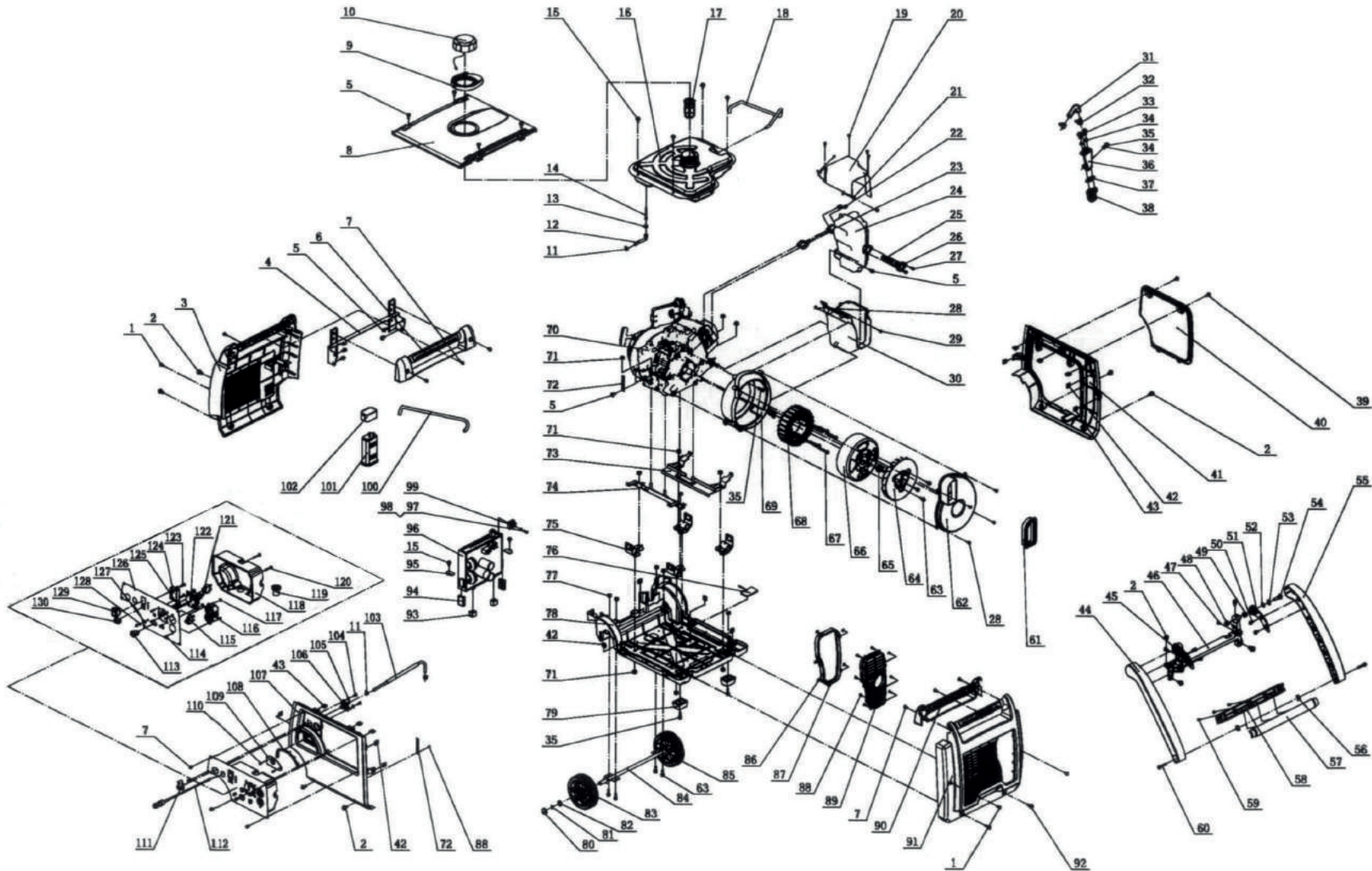
DDE DPG3251Si (apt. DPG3251Si)


#	Part Number	Description	Qty
1	1.9074.4.0516.1	Screw M5x16	4
2	2.08.052.1	Bolt M6x16	10
3	83.200200.01.2	Cover, Left Side	1
4	83.201600.03	Supporter, Left Side	1
5	1.5789.0612	Flange Bolt M6x12	10
6	83.200701.02.2	Handle, Left	1
7	1.9074.4.0512.1	Screw M5x12	11
8	83.200500.01.48	Cover, Top	1
9	83.200502.01	Spillway, Fuel Tank	1
10	83.070100.01	Fuel Tank Cap	1
11	2.06.016	Clip (Ø8.7xØ8)	3
12	83.070011.01	Pipe, Fuel	1
13	2.06.018	Clip (Ø10.5xØ8)	1
14	111.070300.01	Fuel Filter, Mesh	1
15	2.08.068.2	Flange Bolt M5x13	6
16	83.071000.01	Fuel Tank	1
17	83.070300.01	Fuel Filter, Wire Mesh	1
18	83.070014.01	Pipe	1
19	1.845.4216	Screw ST4.2x16	6
20	83.081400.01	Muffler Protector Assembly, Upper	1
21	83.081004.01	Clip	1
22	2.02.001	Nut M6	2
23	83.100001.01	Gasket, Exhaust	1
24	83.101100.02	Muffler Assembly	1
25	46.101300.08	Arrester Assembly, Spark	1
26	46.101503.08	Plate, Spark Arrester	1
27	1.9074.4.0514	Screw M5x14	2
28	1.845.4816	Screw ST4.8x16	6
29	1.845.4219	Screw ST4.2x19	1
30	83.081500.01	Muffler Protector Assembly, Lower	1
31	83.100501.01	Tube, Secondary Air Intake Valve	1
32	2.06.013	Clamp (Ø13.5xØ10)	2
33	1.16674.0616	Flange Bolt M6x16	2
34	1.93.06	Lock Washer Ø6	3
35	1.5789.0620	Flange Bolt M6x20	6
36	83.100500.01	Supporter, Secondary Air Intake Valve	1
37	24.100003.03	Gasket, Air Supply Valve	1
38	24.100300.03	Secondary Air Intake Valve	1
39	2.08.055.1	Bolt, Maintenance Cover	2
40	83.200402.01.48	Protector, Rear Cover	1
41	83.200401.01.48	Supporter, Rear Cover	1
42	2.02.014	Nut M6	12
43	2.02.010	Nut M5	8
44	83.200701.03.2	Drop Handle, Left	1
45	83.200704.01.2	Bracket, Left Side	1
46	83.201600.05	Supporter, Right Side	1
47	1.818.0614	Screw M6x14	2
48	1.6187.1.08	Nut M8	2
49	2.13.001	Bushing Ø13.3xØ19.3x8	2
50	1.5789.0612.1	Flange Bolt M6x12	4
51	83.200704.02.2	Bracket, Right Side	1
52	2.03.001	Bushing (Ø13.3xØ19.3x2)	2
53	2.03.002	Washer (Ø13xØ20x2.5)	2
54	2.08.002	Bolt (M8x28)	2
55	83.200701.04.2	Drop Handle, Right	1
56	2.02.002	Nut (M6)	2
57	83.200705.01.2	Drop Handle, Upper	1
58	83.200705.02.2	Drop Handle, Lower	1
59	1.9074.3.0512.1	Screw M5x12	3
60	1.5789.0635.1	Flange Bolt M6x35	2
61	83.190006.01	Rubber Sleeve, End Cover	1
62	83.190003.01	Generator End Cover	1
63	1.5789.0615	Flange Bolt (M6x15)	7
64	83.190001.01	Generator Fan	1
65	2.02.006	Nut (M14x1.5)	1
66	83.191100.01	Rotor Assembly	1

#	Part Number	Description	Qty
67	1.5789.0645	Flange Bolt M6x45	4
68	83.191200.01	Stator Assembly	1
69	83.190002.01	End Cover, Motor	1
70	83.401	Engine	1
71	1.6177.08	Nut M8	12
72	2.05.050	Wire Clip (100)	2
73	83.201600.02	Supporter, Left	1
74	83.201600.01	Supporter, Right	1
75	83.201200.01	Motor Mount	4
76	83.200607.01	Plug	1
77	1.6182.06	Nut M6	6
78	83.200601.01	Base Setting Complete	1
79	83.201400.01	Rubber, Bottom	2
80	83.201702.01	Cap, Axle	2
81	1.894.1.12	Retaining Ring Ø12	2
82	1.848.12	Washer Ø12	2
83	83.201701.01	Wheel, Left	1
84	83.201500.01	Axle	1
85	83.201701.02	Wheel, Right	1
86	83.200305.01	Spring Patch	5
87	83.200304.01	Rubber Seal Sleeve	1
88	1.845.3595	Screw ST3.5x9.5	8
89	83.200303.01.2	Cover, Right Muffler	1
90	83.200701.01.2	Handle, Right	1
91	83.200302.01.2	Cover, Right Side	1
92	2.08.075.1	Bolt M6x20	2
93	81.220002.00	Mount Rubber, Control Unit	2
94	81.220001.00	Protector, Control Unit	2
95	83.220003.01	Switch, Control Unit	2
96	83.221000.00	Control Unit (120V/60Hz)	1
97	1.5783.0520	Bolt M5x20	1
98	1.93.05	Lock Washer Ø5	1
99	122.190600.00	Rectifier	1
100	83.070013.01	Pipe	1
101	46.070700.00	Carbon Canister (150CC)	1
102	83.070702.01	Support Arm	1
103	83.070011.02	Pipe, Fuel	1
104	1.845.4819	Screw ST4.8x19	2
105	1.97.1.05	Washer Ø5	2
106	83.070400.01	Petcock	1
107	83.200101.01.48	Front Cover	1
108	83.200106.01	Protector	1
109	83.061200.01.2	Guide, Rope	1
110	1.823.0408	Screw M4x8	2
111	83.070001.01	Fuel Knob	1
112	83.130200.01	Pull Choke Assembly	1
113	5.1110.000	Receptacle (DC 12V)	1
114	1.9074.4.0414.1	Bolt and Washer Assembly M4x14	6
115	5.1210.920	AC 20A Breaker	1
116	5.1120.010	Receptacle 5-20R	1
117	1.6177.1.04.1	Nut M4	6
118	83.210002.02	Control Box	1
119	122.210003.01	Wire Jacket, Control Box	1
120	1.9074.1.0535.2	Screw M5x35	2
121	5.1200.110.1	DC 10A Breaker	1
122	5.1120.036	Receptacle (TT-30R)	1
123	1.818.0514.3	Screw M5x14	2
124	83.210016.00	Speed Limiter	1
125	1.5783.0514.3	Bolt M5x14	1
126	83.01.2.2	Control Panel	1
127	1.97.1.05.3	Washer Ø5	1
128	1.6170.05.3	Nut M5	2
129	5.1000.002.1	Switch	1
130	5.1010.001.1	Switch	1

		DDE DPG3251Si (apt. DPG3251Si)	
DYNAMIC DRIVE EQUIPMENT			
Technical department		Assembly drawing	
Engineer, chief designer		John Emerson Jr.	
DYNAMIC DRIVE EQUIPMENT, USA			Page 3

DDE DPG3251Si (ap. DPG3251Si)



 DYNAMIC DRIVE EQUIPMENT		DDE DPG3251Si (ap. DPG3251Si)	
Technical department		Assembly drawing	
Engineer, chief designer		John Emerson Jr.	
DYNAMIC DRIVE EQUIPMENT, USA			Page 4