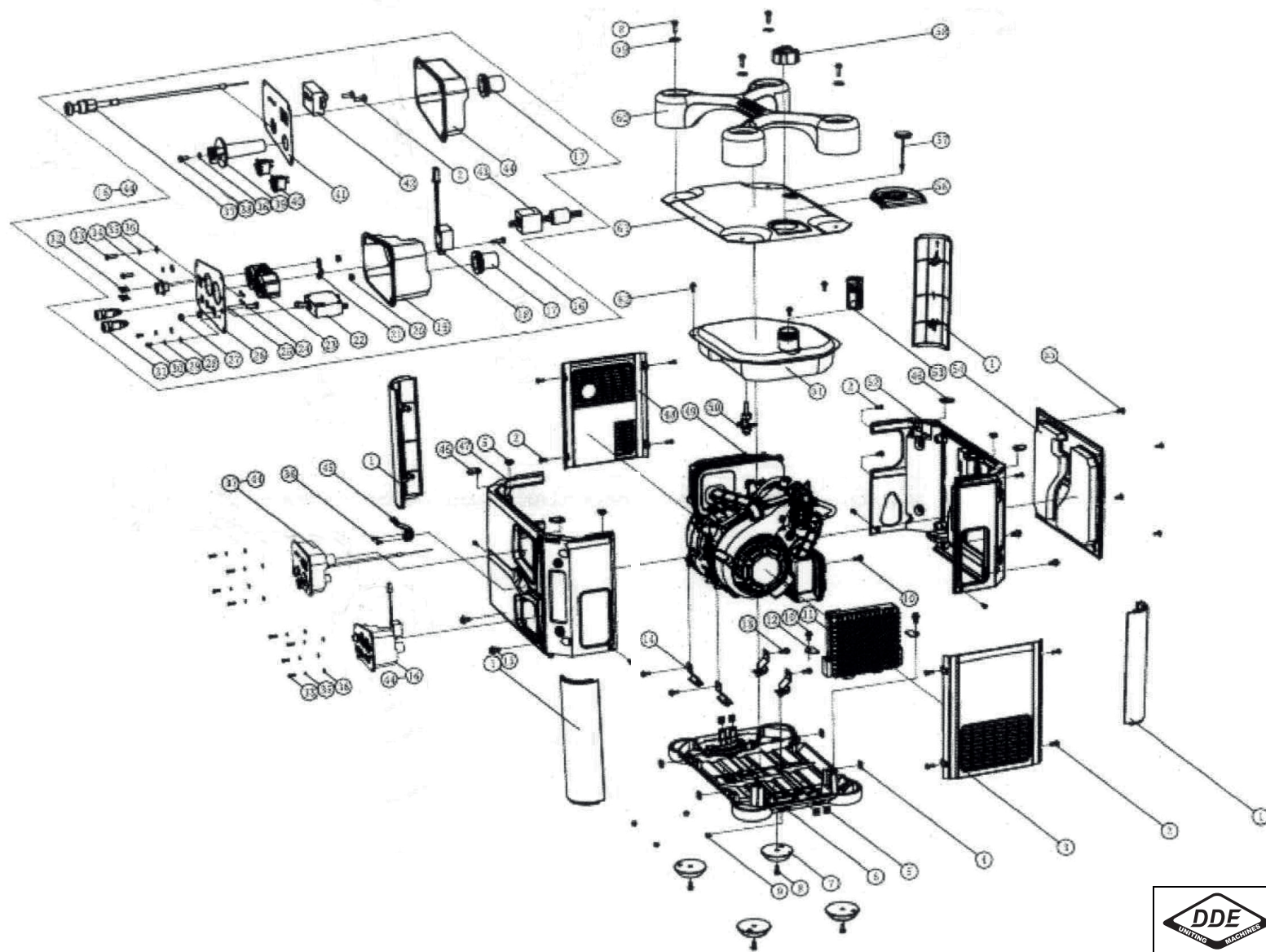



DDE DPG2051Si (apт. DPG2051Si)




		DDE DPG2051Si (apт. DPG2051Si)	
DYNAMIC DRIVE EQUIPMENT			
Technical department		Assembly drawing	
Engineer, chief designer		John Emerson Jr.	
DYNAMIC DRIVE EQUIPMENT, USA			Page 1

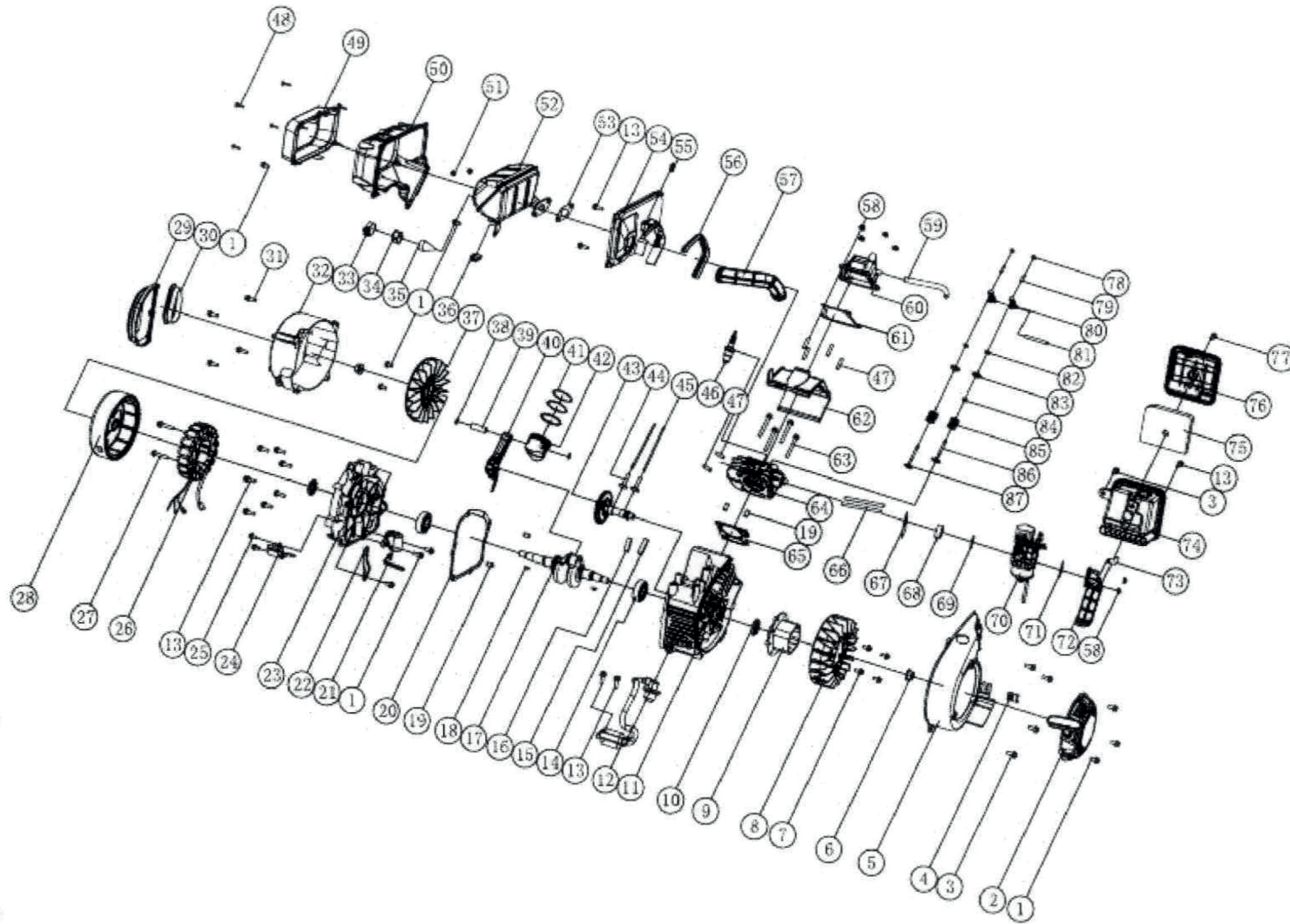
DDE DPG2051Si (aprt. DPG2051Si)


No.	Part Number	Description	Qty
1	0902.200800.00	CROSS BANDING	4
2	GB818 M5X14 03	SCREW M5x14	17
3	0902.200300.00	RIGHT SIDE COVER ASSEMBLY	1
4	02.006002.00	NUT M6	4
5	02.005002.00	NUT M5	7
6	0902.200600.00	BASE ASSEMBLY	1
7	0902.200604.00	BASE MOUNTING4	4
8	GB5789 M6X22 03	BOLT M6X22	8
9	GB6177.1 M6 03	NUT M6	4
10	GB5789 M6X12	BOLT M6X12	3
11	0902.221000.01	CONTROL UNIT	1
12	0902.220003.00	CLIP	2
13	GB5789 M6X15	BOLT M6X15	4
14	0902.200605.00	STOPPER	4
15	08.006001.00	BOLT M6	4
16	GB845 ST4.2x20	TAPPING SCREW	1
17	ST02FD-05212001	RUBBER PLUG	2
18	IV02.P-00000000	PARALLEL POWER UNIT	1
19	0902.212001.00	OUTPUT PANEL BOX	1
20	GB6177.1 M4 03	BOLT M4	2
21	0902.210012.00	CLIP	1
22	ST02FD-05302003-13.3C	AC BREAKER 13.3A (CSA)	1
23	ST02FD-05502023-CSA	RECEPTACLE 5-20R	1
24	GB5783 M5X14 03	BOLT M5X14	1
25	GB6170 M2 03	BOLT M2	4
26	0902.212100.A4	OUTPUT PANEL	1
27	GB41 M5 03	NUT M5	2
28	GB848 3 03	FLAT WASHERΦ3	2
29	GB859 3 03	SPRING WASHERΦ3	2
30	GB823 M3x6 03	SCREW M3x6	2
31	0902.210001.00	PARALLEL TERMINAL	2
32	GB818 M2x10 03	SCREW M2x10	4
33	GB818 M4x14 03	SCREW M4x14	10
34	22.012001.02	COMMUNICATION RECEPTACLE	1
35	GB93 4 03	SPRING WASHERΦ4	10
36	GB97.1 4 03	FLAT WASHERΦ4	11
37	0902.130200.00	CHOCK CABLE ASSEMBLY	1
38	GB818 M4x12 03	SCREW M4x12	3
39	0902.070001.00	FUEL COCK KNOB	1
40	ST01FD-05701001	ENGINE SWITCH	2
41	0902.211100.00	CONTROL PANEL	1
42	0902.126000.00	IGNITION ASSEMBLY	1
43	0902.210200.00	MAGNET RING ASSEMBLY	1
44	0902.211001.00	CONTROL PANEL BOX	1
45	0902.061200.00	GUIDE.ROPE HANDLE	1
46	02.006003.00	NUT M6	4
47	0902.200100.00	FRONT COVER ASSEMBLY	1
48	0902.200200.00	LEFT SIDE COVER ASSEMBLY	1
49	149.000000.A3	ENGINE	1
50	0902.070400.00	FUEL COCK COMP.	1
51	0902.071000.00	FUEL TANK ASSEMBLY	1

No.	Part Number	Description	Qty
52	0902.200401.00	COVER,REAR 1	1
53	0902.070300.00	FUEL FILTER COMP.	1
54	0902.200402.00	MAINTENANCE COVER	1
55	GB818 M6x14 03	SCREW M6x14	4
56	0902.200502.00	FUEL GUIDE PLATE	1
57	0902.200503.00	SEAL,PLUG CAP	1
58	0902.070100.00	FUEL TANK CAP COMP.	1
59	GB5287 6 03	FLAT WASHERΦ6	4
60	0902.200700.00	HOLDER ASSEMBLY	1
61	0902.200501.00	COVER,TOP	1
62	ST02FD-05010703	BOLT M5x13	3

		DDE DPG2051Si (aprt. DPG2051Si)	
DYNAMIC DRIVE EQUIPMENT			
Technical department		Assembly drawing	
Engineer, chief designer		John Emerson Jr.	
DYNAMIC DRIVE EQUIPMENT, USA			Page 2

DDE DPG2051Si (apт. DPG2051Si)




		DDE DPG2051Si (apт. DPG2051Si)	
DYNAMIC DRIVE EQUIPMENT			
Technical department		Assembly drawing	
Engineer, chief designer		John Emerson Jr.	
DYNAMIC DRIVE EQUIPMENT, USA			Page 3

DDE DPG2051Si (ap. DPG2051Si)

No.	Part Number	Description	Qty
1	GB5789 M6X12	BOLT M6X12	10
2	0902.061000.00	STARTER ASSEMBLY	1
3	GB5789 M6X15	BOLT M6X15	5
4	02.006001.00	NUT	1
5	0902.080100.00	FAN COVER COMP.	1
6	02.012000.10	NUT M12X1.25	2
7	GB16674 M5X12	BOLT M5X12	4
8	0902.080001.00	COOLING FAN	1
9	0902.060001.00	STARTING HUB	1
10	12.020000.01	OIL SEAL 20X35X5	2
11	0902.030100.00	CRANKCASE COMP	1
12	0902.123000.01	IGNITION ASSEMBLY	1
13	GB5789 M6X20	BOLT M6X20	12
14	GB276 6204	BEARING	2
15	0902.030013.01	PROTECTOR COVER SEAL 2	1
16	0902.030013.00	PROTECTOR COVER SEAL 1	1
17	0902.050100.00	CRANK COMP	1
18	16.003001.00	KEY	2
19	139FMD-1001001	DOWEL PIN	4
20	0902.030008.00	CRANKCASE GASKET	1
21	0902.127000.00	OIL SENSOR	1
22	0902.030010.00	OIL SENSOR PLATE	1
23	0902.030007.00	CRANKCASE COVER	1
24	0902.122000.00	TRIGGER ASSEMBLY	1
25	GB16674 M6X12	BOLT M6X12	2
26	0902.191100.01	STATOR COMP.	1
27	GB5789 M6X35	BOLT M6X35	2
28	0902.191200.00	ROTOR COMP.	1
29	0902.190006.01	RUBBER.END COVER 2	1
30	0902.190006.00	RUBBER.END COVER 1	1
31	GB5789 M6X22 03	BOLT M6X22	4
32	0902.190002.00	END COVER	1
33	06.025001.20	SPARK ARRESTER CLAMP	1
34	0902.101501.00	SPARK ARRESTER BASE	1
35	0902.101300.00	SPARK ARRESTER	1
36	0902.081002.00	RUBBER SEAL	1
37	0902.190001.00	MOTOR FAN	1
38	09.011001.00	PISTON PIN CLIP	2
39	0902.050003.00	PISTON PIN	1
40	0902.050200.00	CONNECT ROD ASSEMBLY	1
41	0902.050300.00	PISTON RING SET	1
42	0902.050005.00	PISTON	1
43	0902.040100.00	CAMSHAFT COMP.	1
44	0902.040013.00	VALVE TAPPET	2
45	0902.040005.00	PUSH ROD	2
46	E6RTC	SPARK PLUG	1
47	01.606002.00	EXHAUST BOLT	6
48	GB845 ST4.8X17	TAPPING SCREW ST4.8X17	4
49	0902.081300.00	MUFF. PROTECTOR ASSY. RH	1
50	0902.081200.00	MUFF. PROTECTOR ASSY.MIDDLE	1
51	GB6175 M6 03	NUT M6	2

No.	Part Number	Description	Qty
52	0902.101100.00	MUFFLER COMP	1
53	0902.100001.00	EXHAUST GASKET	1
54	0902.081100.00	PROTECTOR MUFF. SIDE	1
55	0902.081003.00	SETTING FLASH BOARD	1
56	0902.081001.00	MUFF. PROTECTOR SEAL	1
57	0902.080003.00	DUCT	1
58	GB6177.1 M6 03	NUT M6	6
59	0902.020001.00	BREATHER PIPE	1
60	0902.021000.00	CYL. HEAD COVER ASSEMBLY	1
61	0902.020002.00	CYLINDER COVER GASKET	1
62	0902.080200.00	AIR SHROUD,CYLINDER COMP.	1
63	GB5789 M6X50	BOLT M6X50	4
64	0902.010100.00	CYLINDER HEAD COMP.	1
65	0902.030009.00	GASKET,CYLINDER	1
66	01.606001.00	CARBURETOR BOLT	2
67	0902.130002.00	GSKT,INSULATOR	1
68	0902.130001.00	INSULATOR.CARB.	1
69	0902.130003.00	GSKT,CARB	1
70	0902.131000.00	CARB. ASSEMBLY	1
71	0902.130004.00	GSKT,AIR CLEANER	1
72	0902.090004.00	PIPE,AIR CLEANER	1
73	0902.090003.00	JT.,BREATHER PIPE	1
74	0902.091100.00	CASE,AIR CLEANER COMP.	1
75	0902.091003.00	AIR CLEANER ELEMENT	1
76	0902.091200.00	CASE,AIR CLEANER	1
77	08.006020.00	BOLT M6X20	1
78	02.005001.00	NUT,VALVE ADJUSTING	2
79	0902.040012.00	SCREW,VALVE ADJUSTING	2
80	0902.040009.00	ARM,VALVE ROCKER	2
81	0902.040016.00	SHAFT,SCREW ROCKER	1
82	CT166FD-1040003	LOCK CLIP. VALVE	2
83	CT166FD-1040004	RET.,VALVE SPRING	2
84	0902.040017.00	OIL SEAL,VALVE	1
85	CT166FD-1040005	SPRING,VALVE	2
86	0902.040002.00	VALVE,INTAKE	1
87	0902.040006.00	VALVE,EXHAUST	1

		DDE DPG2051Si (ap. DPG2051Si)	
DYNAMIC DRIVE EQUIPMENT			
Technical department		Assembly drawing	
Engineer, chief designer		John Emerson Jr.	
DYNAMIC DRIVE EQUIPMENT, USA			Page 4